



DAILY FIXED INCOME & UNIT TRUST

December 29, 2025

"Modest selling pressure builds ahead of the T-bond auction"

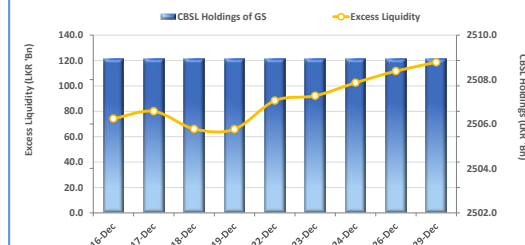
Preceding the T-bond auction tomorrow, the secondary market registered mild selling pressure. The yield curve rose approximately by 5-10bps as a result, particularly across the short to the belly end of the curve. However, the volumes remained low during today's session. As the trades were clustered towards the middle-end of the yield curve, 15.06.2029 maturity traded at 9.65%, both 15.09.2029 and 15.10.2029 traded at 9.70% while 15.12.2029 traded higher at 9.75%. Additionally, 01.07.2030 and 15.03.2031 maturities changed hands at 9.80% and 10.00%, respectively. On the external front, the LKR remained flat against the USD at LKR 309.71/USD compared to the previous day. Overnight liquidity in the banking system marginally expanded to LKR 118.6Mn from LKR 111.7Mn recorded previously.

UNIT TRUSTS

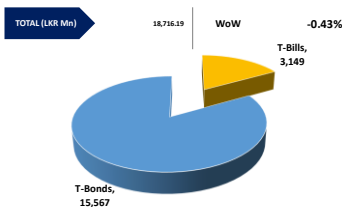
First Capital Unit Trust Funds		Sell Price	Buy Price	Avg. Yield
		LKR	LKR	
First Capital Money Market Fund	FCMMF	3,562.06	3,562.06	8.03%
First Capital Gilt Edge Fund	FCGEF	2,658.39	2,658.39	7.09%
First Capital Wealth Fund	FCWF	2,227.45	2,227.39	8.44%
First Capital Equity Fund	FCEF	4,405.50	4,339.42	36.44%
First Capital Money Plus Fund	FCMPF	1,143.36	1,143.36	6.53%
First Capital Fixed Income Fund	FCFIF	4,288.65	4,288.54	8.10%

28-Dec-25

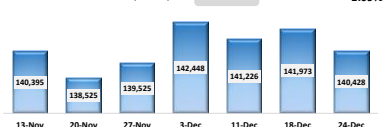
EXCESS LIQUIDITY AND CBSL HOLDINGS



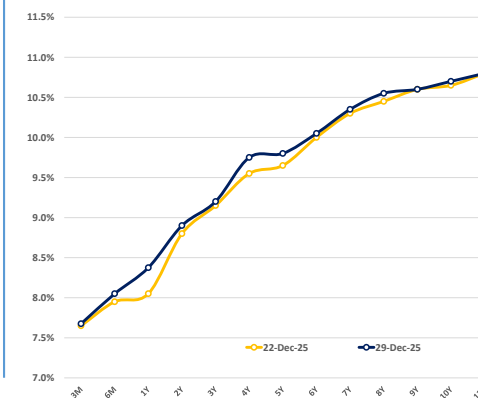
OUTSTANDING STOCK [GSEC]



FOREIGN HOLDING (LKR MN)

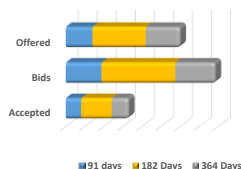


BILLS AND BONDS YIELDS



Tenure	Bid	Offer	Today	Last Week	Change (bps)
< 91 Days	7.75%	7.60%	7.68%	7.65%	+3
< 182 Days	8.10%	8.00%	8.05%	7.95%	+10
< 364 Days	8.50%	8.25%	8.38%	8.05%	+33
15-Sep-27	8.95%	8.85%	8.90%	8.80%	+10
15-Dec-28	9.25%	9.15%	9.20%	9.15%	+5
15-Dec-29	9.80%	9.70%	9.75%	9.55%	+20
01-Jul-30	9.85%	9.75%	9.80%	9.65%	+15
01-Dec-31	10.10%	10.00%	10.05%	10.00%	+5
15-Dec-32	10.40%	10.30%	10.35%	10.30%	+5
01-Nov-33	10.60%	10.50%	10.55%	10.45%	+10
15-Sep-34	10.65%	10.55%	10.60%	10.60%	0
15-Jun-35	10.75%	10.65%	10.70%	10.65%	+5
15-Jan-37	10.85%	10.75%	10.80%	10.80%	0
15-Aug-39	N/A	N/A	N/A	N/A	N/A
01-Jan-41	N/A	N/A	N/A	N/A	N/A

T-BILL AUCTION (LKR MN)



Auction Date	23-Dec-25
Settlement Date	26-Dec-25
91 days	7.55% ▲ +4 bps
184 days	7.95% ▲ +4 bps
364 days	8.19% ▲ +16 bps

T-BOND AUCTION (LKR MN)



MATURITY TABLE (LKR MN)

